

# SOFT PLASTICS 101

## CHAPTER 6

### RIGGING STANDARD JIGHEADS

In this chapter we look at selecting a standard jighead, and effectively rigging a soft plastic on a standard jighead.

#### DECIDING FACTORS

When selecting a standard jighead you need to consider the weight of the jighead, size of the hook, gauge of the hook – fine or heavy wire and the style of the jighead. We will base our rigging on the popular TT Lures HeadlockZ jighead as this jighead is designed with a 'head lock' grub keeper that makes rigging simple and it will secure the ZMan 10X Tough soft plastics in place, along with other brands of plastics.



#### JIGHEAD WEIGHT

Jigheads range in weight from as light as 1/40oz up to around 6oz, to suit everything from finesse bream and trout fishing to deep offshore fishing. Popular weights in the rivers, estuaries and impoundments range from around 1/28oz to 1/2oz, bay and offshore around 1/8oz – 3oz, and those fishing big plastics in very deep water and strong currents may even push beyond the 3oz weight.

Important things to consider when selecting a jighead weight is where in the water column the target species is holding, current, depth, casting distance and the plastic you are fishing with, for example a plastic with action will sink slower than a jerkbait style plastic.

You will notice that most anglers carry a selection of weights to cover a variety of situations, target species and soft plastic styles. Over time anglers grow the contents of their jighead tray, learn which are their go-to heads and build a stock of their favourites. Here's a few general examples of some popular weights that anglers may carry in their kit for different species and situations:

**Bream** 1/20oz, 1/16oz, 1/12oz, 1/8oz, 1/6oz, 1/4oz

**Bass** 1/8oz, 1/4oz, 3/8oz, 1/2oz

**Flathead** 1/8oz, 1/4oz, 3/8oz, 1/2oz

**Snapper** 1/8oz, 1/4oz, 3/8oz, 1/2oz, 3/4oz, 1oz

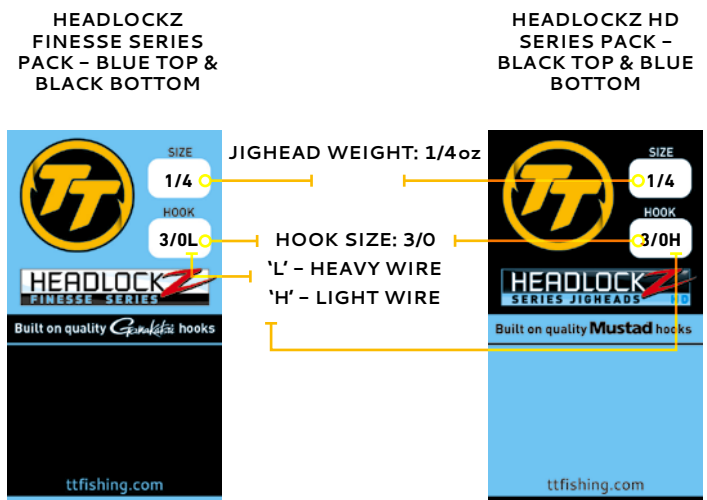
**General River/Estuary** 1/16oz, 1/8oz, 1/4oz, 3/8oz, 1/2oz

**General Offshore** 1/8oz, 1/4oz, 3/8oz, 1/2oz, 1oz, 1 1/2oz, 2oz

#### HOOK SIZE

When it comes to hook size it's important to select a hook size that suits your target species and then select a plastic that suits both the hook size and target species. Check out the guide at the end of this PDF to assist you to select a jighead hook size to suit your chosen ZMan soft plastic.

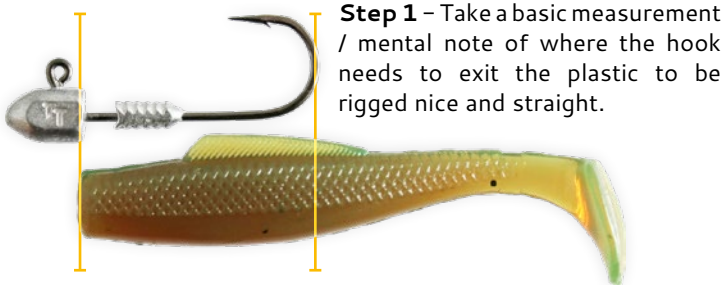
When selecting a jighead you will also note that the hook size will have a letter next to it, generally an 'L' meaning light wire or fine wire hook, 'H' for heavy wire and 'XH' for extra heavy. Fine or light wire hooks are constructed from finer wire which gives them the ultimate penetration, however they are not as strong as the heavy and extra heavy hooks, making them more suitable to experienced angler and those fishing light lines and light drag settings. Heavy and extra heavy wire hooks are preferred for general fishing and TT Fishing ensure these heavier hooks are still super sharp by building their jigheads on black nickel, chemically sharpened hooks. An easy way to differentiate between HeadlockZ Finesse – fine wire and HeadlockZ HD – heavy / extra heavy wire is by the 'L' or 'H' / 'XH' but also HeadlockZ Finesse packaging has a blue top and black bottom, while the HeadlockZ HD is reversed with a black top and blue bottom.



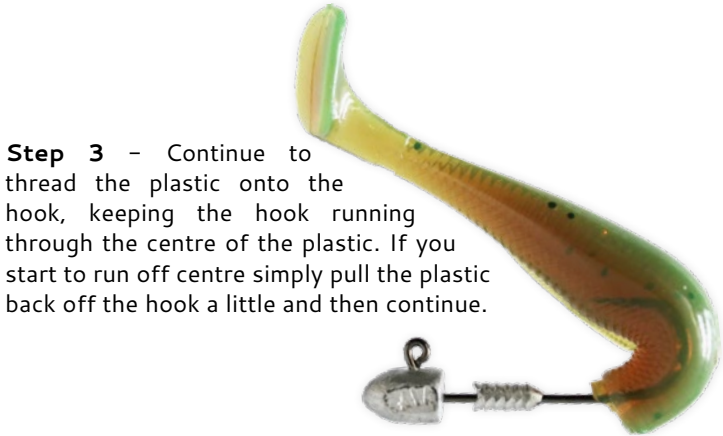
# SOFT PLASTICS 101

## CHAPTER 6

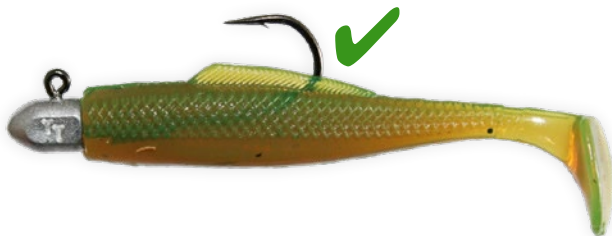
### RIGGING STANDARD JIGHEADS



**Step 2** – Thread the point of the hook through the centre of the head / nose of the plastic, like threading on a worm.



**Step 4** – Once you have reached the exit point that you noted earlier, push the hook point out through the top of the plastic.



**Step 5** – Once the hook point exits the plastic pull the plastic down onto the bend of the hook, then push it up and over the 'head lock' grub keeper and snug against the jighead. You can then pull it back a little so that it is sitting straight on the hook and give it a swim in the water to ensure it is swimming correctly.



If you exit the plastic too soon you will find that you do not have enough plastic on the hook to secure it on the keeper.



If you exit the plastic too far along you will find that you have too much plastic bunched onto the hook and it will not sit straight.



# SOFT PLASTICS 101

## CHAPTER 6

### RIGGING STANDARD JIGHEADS

#### CHOOSING A STANDARD JIGHEAD HOOK SIZE FOR YOUR ZMAN SOFT PLASTIC

This rigging guide is designed to assist you when matching a ZMan soft plastic and TT HeadlockZ HD jighead. The HeadlockZ grub keeper has been designed to lock on the 10X Tough, yet super-soft and realistic, ZMan ElaZtech soft plastic, cast after cast, fish after fish!

#### HOOK SIZES FOR HEADLOCKZ HD JIGHEADS (UNLESS OTHERWISE STATED)

ZMAN SOFT PLASTIC	HOOK SIZE	ZMAN SOFT PLASTIC	HOOK SIZE
1.75" Micro GOAT	4   HeadlockZ Finesse: 2	3.75" StreakZ	1/0, 2/0
1.75" Shad FryZ	4   HeadlockZ Finesse: 2	3.5" Pro CrawZ	3/0 - 6/0
1.75" Tiny TicklerZ	4, 2   HWS: 2, 1   NedlockZ: 2	3.75" GOAT	3/0 - 5/0
1.75" LarvaZ	Head Hunter: 6	4" Mulletron	5/0, 6/0
2" StingerZ	4   HeadlockZ Finesse: 2   HWS: 2	4" Finesse ShadZ	1/0, 2/0
2" Micro WormZ	4   HeadlockZ Finesse: 2	4" Scented Jerk ShadZ	1/0 - 4/0
2" GrubZ	4, 2, 1	4" StreakZ Curly TailZ	2/0 - 4/0
2.5" GrubZ	4, 2, 1, 1/0	4" DieZel MinnowZ	3/0 - 5/0
2.5" ST GrubZ	4, 2, 1, 1/0	4" SwimmerZ	4/0, 5/0
2.5" Slim SwimZ	4, 2, 1, 1/0	4" Turbo CrawZ	3/0, 4/0
2.5" PrawnZ	4, 2, 1, 1/0	4" Hard Leg FrogZ	ChinlockZ : 6/0
2.5" TRD CrawZ	2, 1, 1/0	4" Pop FrogZ	ChinlockZ : 6/0
2.75" DropKickerZ	1, 1/0	4" GOAT ToadZ	ChinlockZ : 6/0
2.75" FinesseFrogZ	ChinlockZ : 2/0	4.2" Trick ShotZ	3/0, 4/0
2.75" TRD BugZ	2, 1	4.25" Billy GOAT	4/0 - 6/0
3" Slim SwimZ	2/0, 3/0	5" DieZel MinnowZ	6/0, 7/0
3" MinnowZ	2/0 - 4/0	5" StreakZ Curly TailZ	4/0, 5/0
3" Scented ShrimpZ	2/0 - 4/0	5" Scented PaddlerZ	4/0, 5/0
3" Baby GOAT	1, 1/0, 2/0	5" StreakZ	4/0, 5/0
3" TRD HogZ	1, 1/0, 2/0	5" Scented Jerk ShadZ	4/0, 5/0
3.3" Mulletron	3/0, 4/0	6" DarterZ	2/0 - 6/0
3.5" Drop KickerZ	2/0, 3/0	6" SwimmerZ	5/0 - 8/0
3.5" GrubZ	2/0, 3/0	7" DieZel MinnowZ	SwimlockZ: 9/0, 10/0
3.5" Trick SwimZ	3/0, 4/0	7" Scented Jerk ShadZ	7/0, 8/0
3.5" Trick ShotZ	1/0, 2/0	8" StreakZ XL	7/0, 8/0
3.5" EZ ShrimpZ	2/0 - 4/0	9" GrubZ	6/0 - 8/0

#### ZMAN SOFT PLASTICS

- 10X Tough – better stands up to pickers and toothies, more fish per lure.
- Super-soft realistic feel – maximum action and fish keep biting!
- Buoyant – rig to fish topwater to deep. Tail up action attracts fish and triggers strikes.

#### TT HEADLOCKZ FINESSE

- Built on a fine gauge Gamakatsu hook for the ultimate penetration with light lines and light drag settings.
- Unique 'head lock' grub keeper.

#### TT HEADLOCKZ HD

- Built on a brutally strong, chemically sharpened Mustad black nickel hook.
- Unique 'head lock' grub keeper.

#### TT HEADLOCKZ EXTREME

- Beast of a hook available in 9/0 and 10/0 to suit XOS plastics.
- Weights from 2oz up to 6oz for extreme depths.

#### CARING FOR YOUR ZMAN

- Store ZMan in their original packets – they may react with other plastics.
- Avoid storing lures in extreme heat for maximum life.

### NEXT UP IN CHAPTER 7: RIGGING WEEDLESS JIGHEADS

